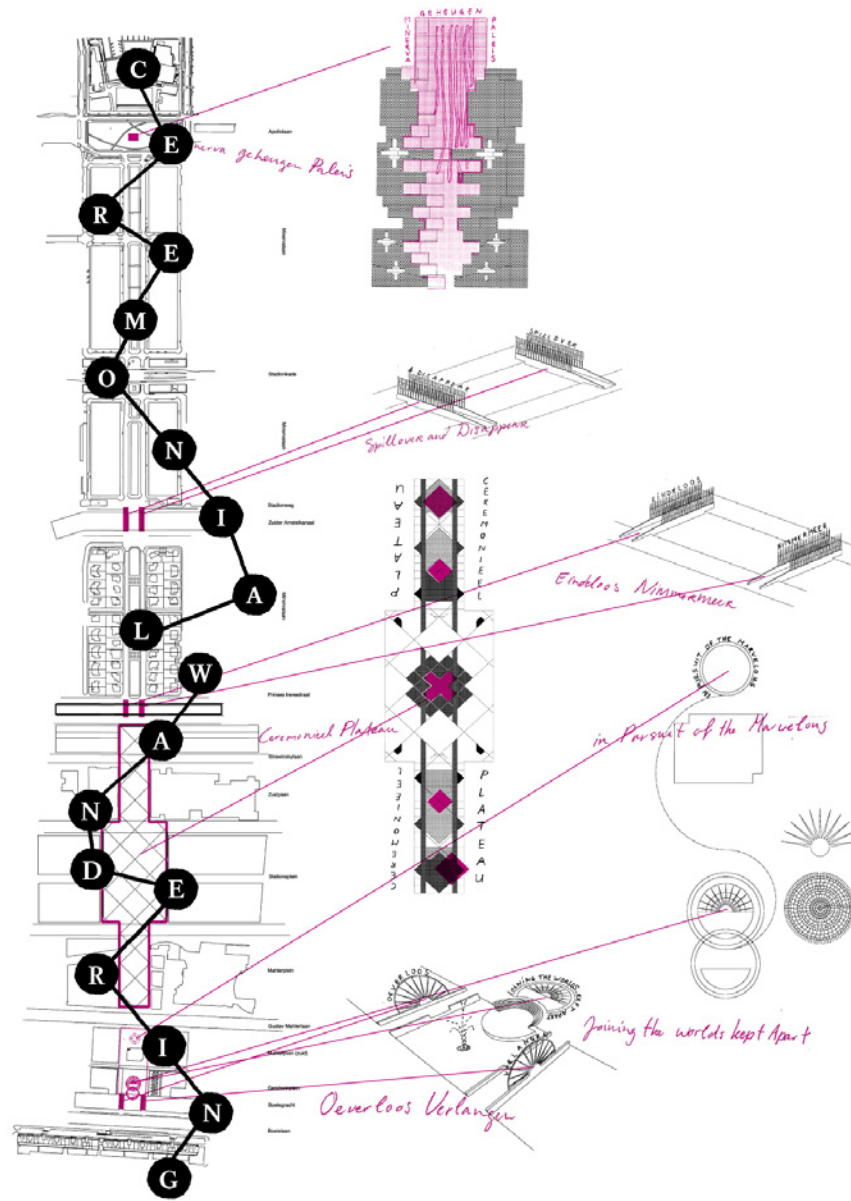


CEREMONIAL WANDERING

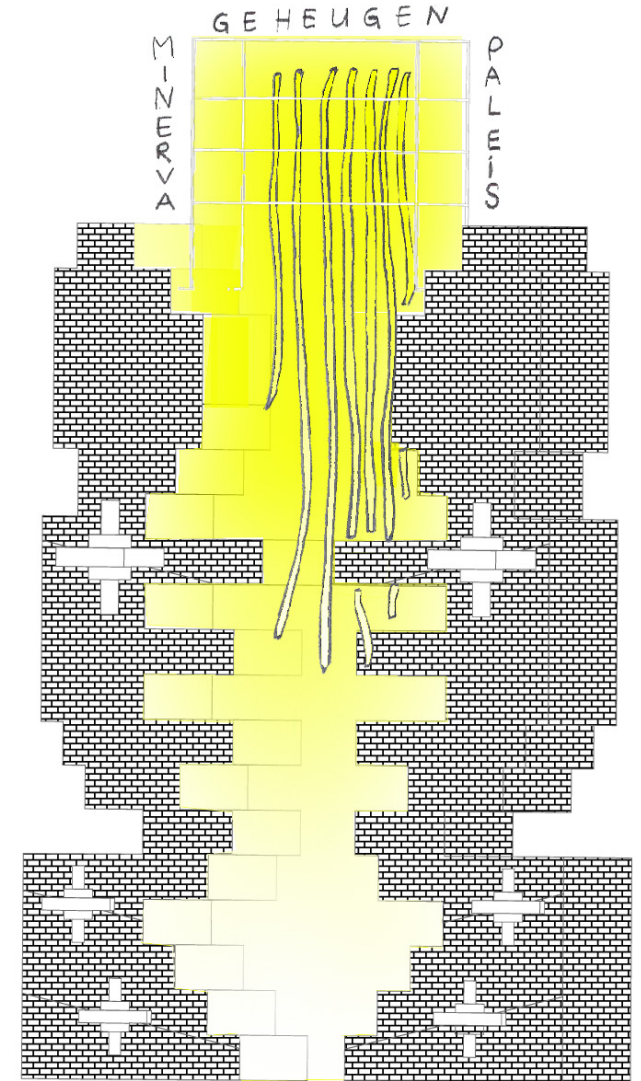
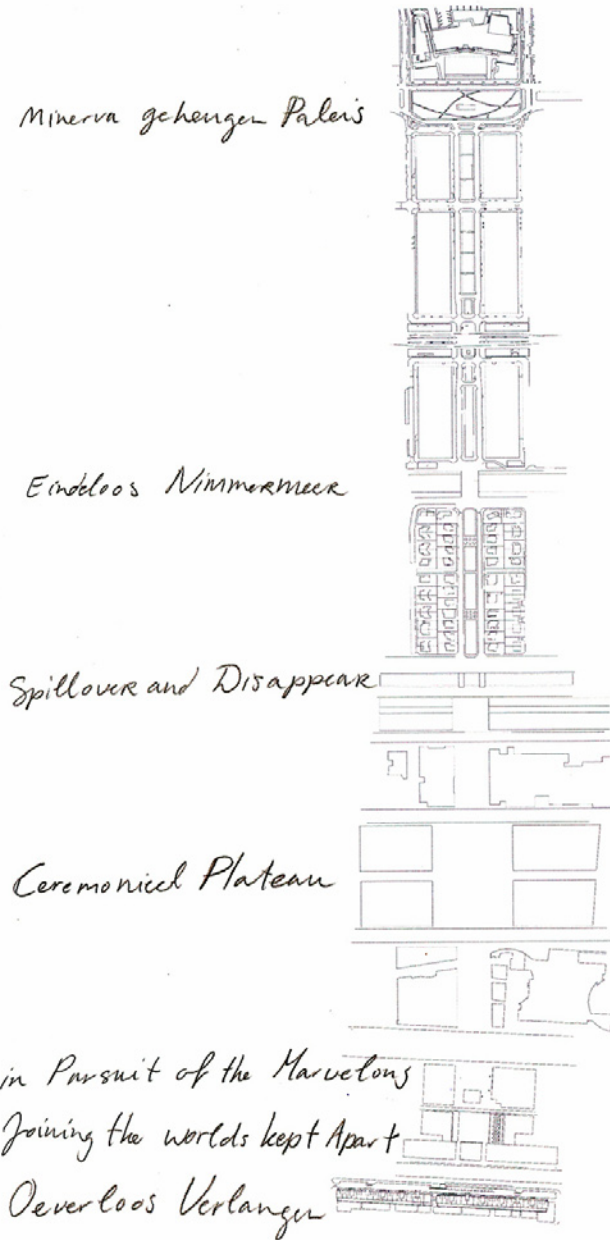
2008 - 2009
Minerva-as,
Virtueel Museum Zuidas
Amsterdam
i.c.w. Richard Niessen and
Joost Vermeulen

After the design of the water square *Oeverloos Verlangen* was disappointingly rejected in 2008 for various reasons, the municipality of Amsterdam gave Tee's team a new assignment. They were asked to make a study of the possible use of art on the Minerva-as, the main axis connecting the historical centre of Amsterdam with the new business area called the Zuidas. This axis originates from the beginning of the 20th century and was designed by the famous Dutch architect Berlage. In their study, Tee's team proposed several artistic interventions on the axis, starting with a memory palace *Minerva Geheugen Paleis* at the beginning of the axis, and ending with the square *Joining the worlds kept apart* on Gershwin Square. For the canal at the south of the axis they proposed two bridges: *Oeverloos* and *Verlangen*.



1
The Minerva axe as a poetic
area

2
MINERVA GEHEUGEN
PALEIS
Sketch for a monumental
memory palace at the be-
ginning of the axe.

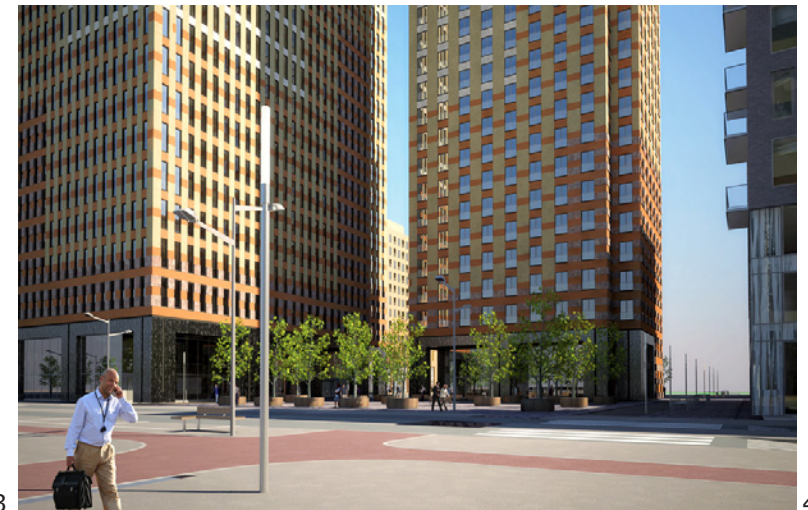
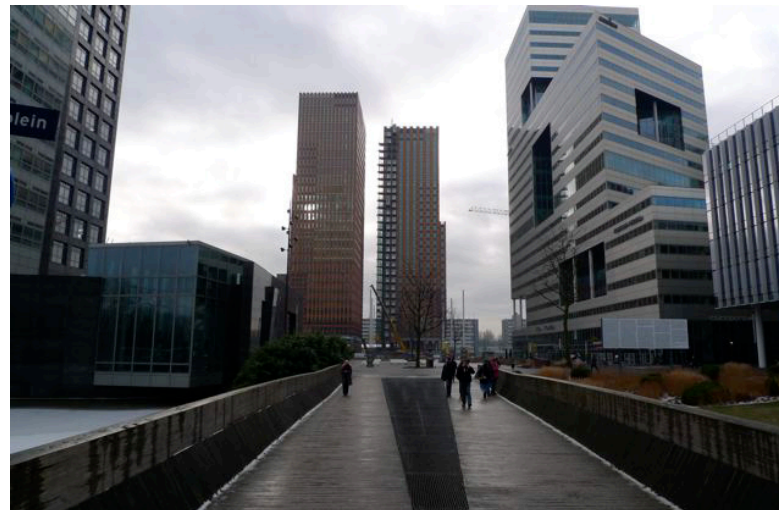
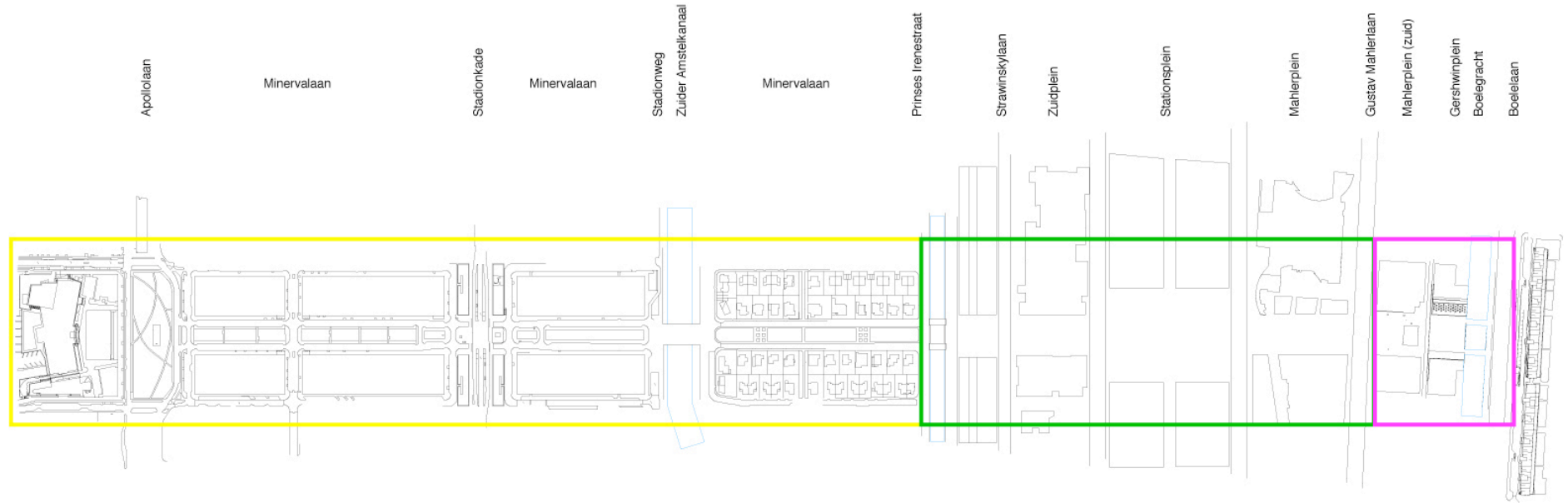


1
Map of the area, in yellow
the past, green the present
and purple the future

2
VERLEDEN
Past

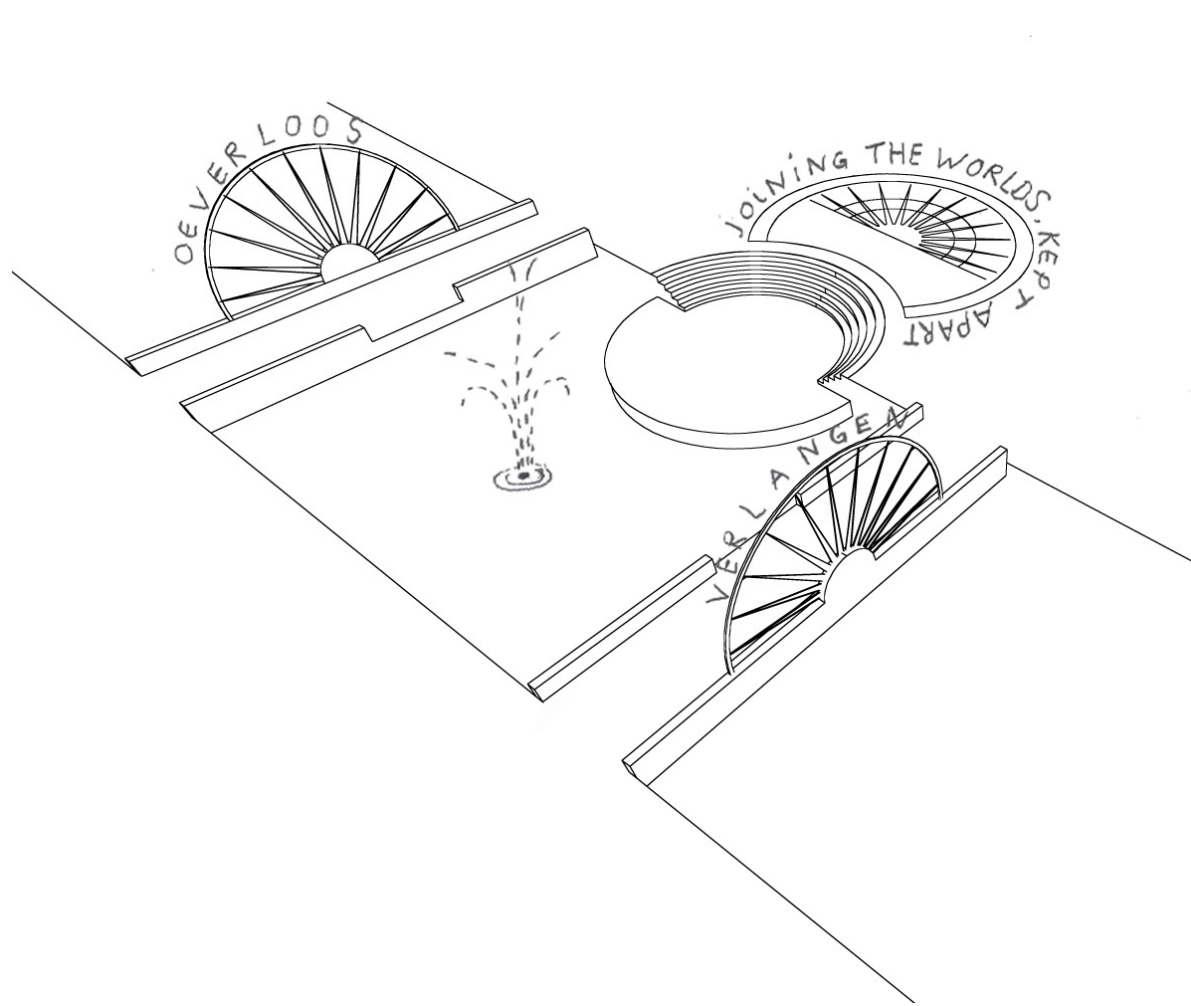
3
HEDEN
Present

4
TOEKOMST
Future

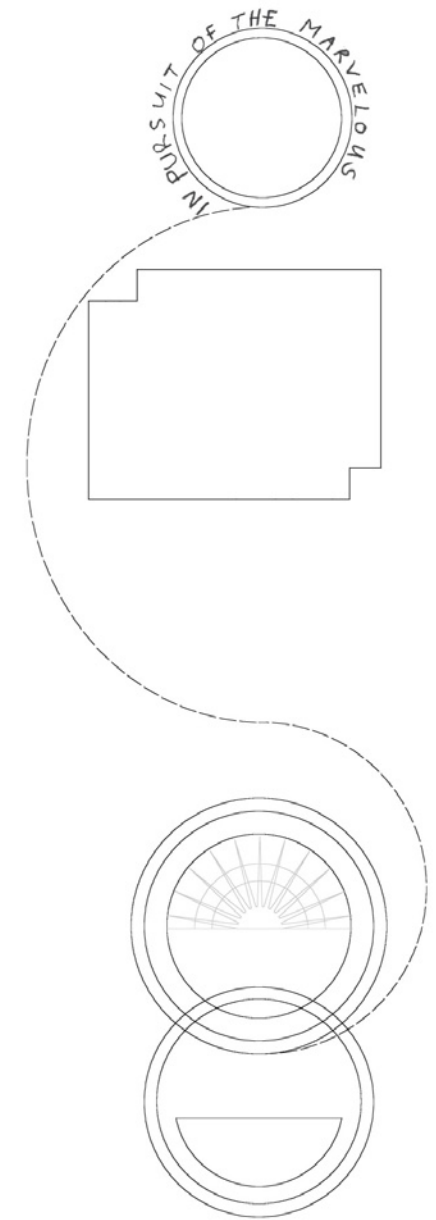


1
Sketch for Gershwin square
of the two bridges *Oeverloos* (*Shoreless*) and *Verlangen* (*Longing*), and the
square *Joining the worlds kept apart*

2
Sketch for Gustav Mahler
square South and Gershwin
square



1



2